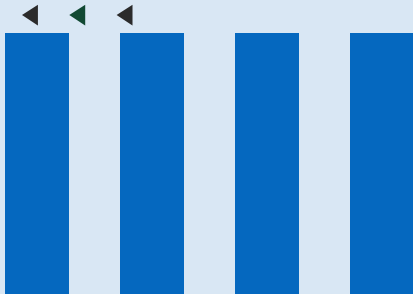




GROUPE
SAE



PANORAMIC
INDOOR Model



Technical/Sales Specifications

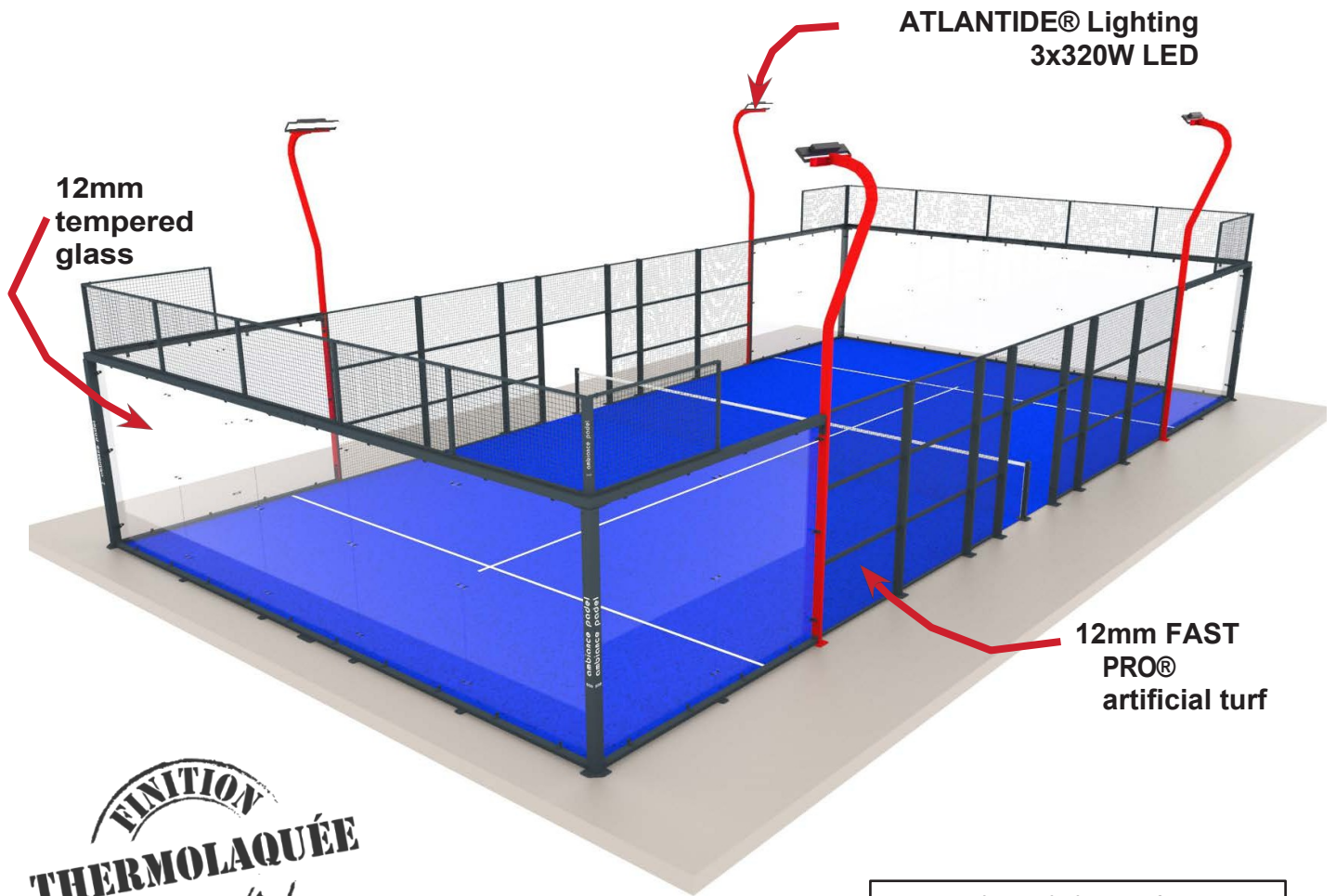


ambiance padel®



+
 +
 +
 ≠
 +

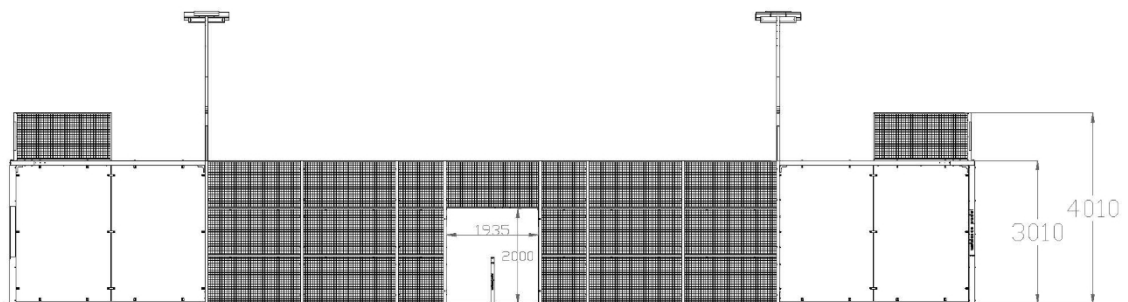
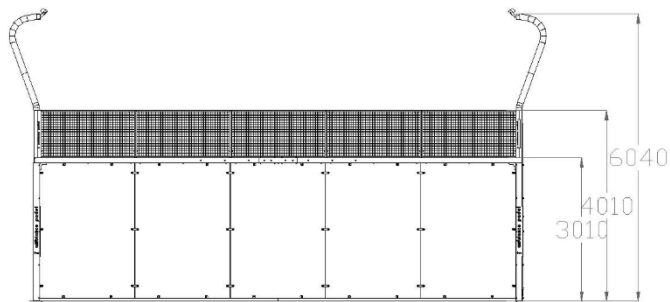
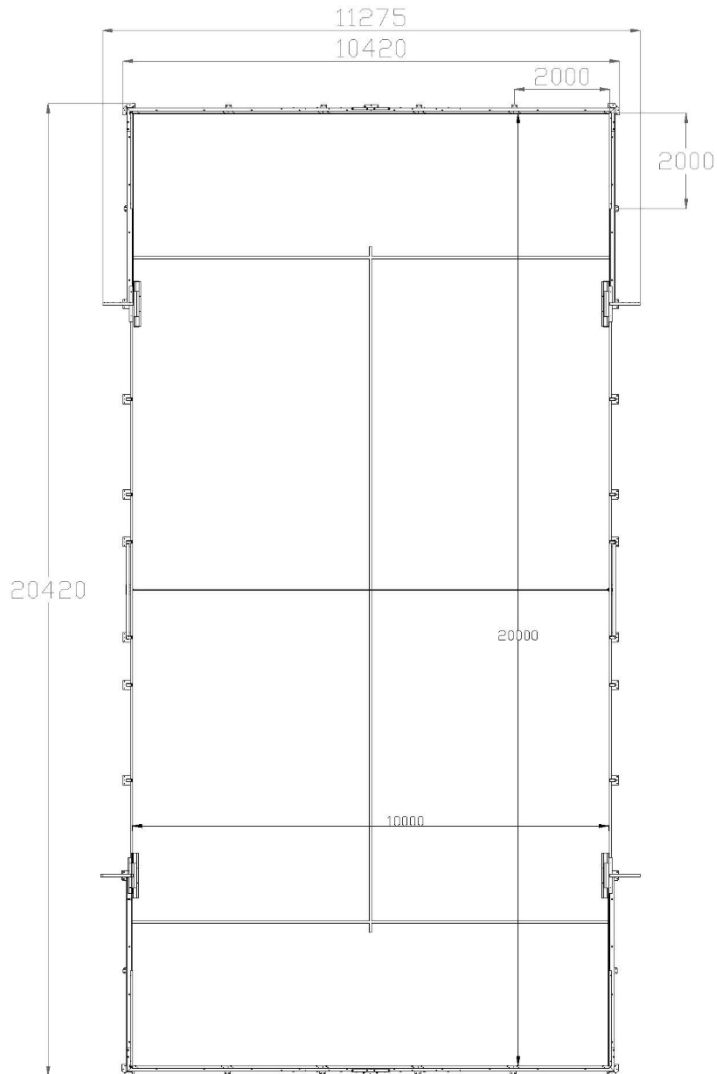
General description:



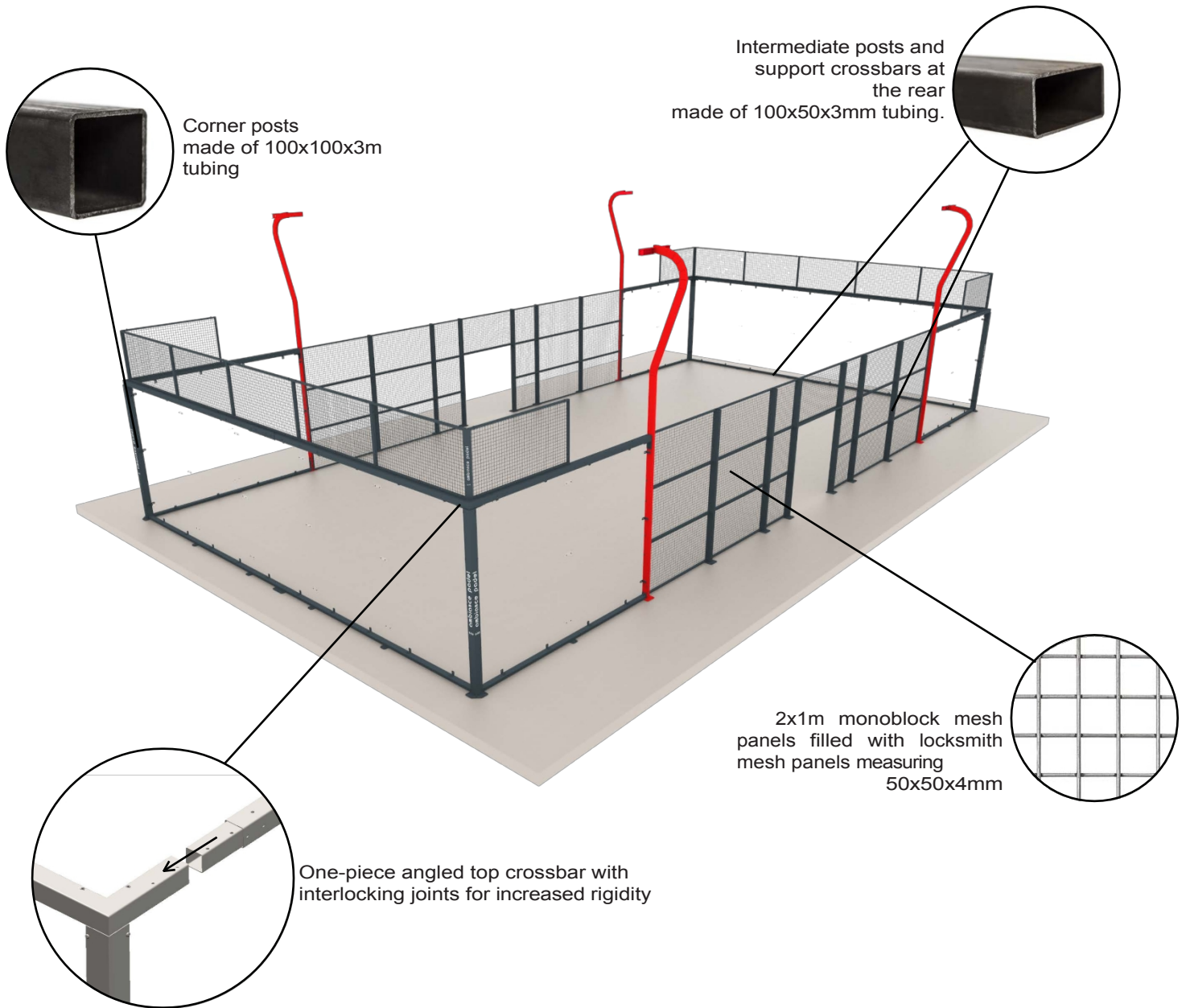
Complies with the specifications
PADEL by the **F.F.T.**

Manufacturer	SAE Group (SAE France)
Playing area dimensions	20x10m
Footprint	20.42 x 10.42 m
Total footprint (with lighting)	20.42 x 11.28 m
Support structure	Galvanized steel
Finish	Epoxy powder coating
Glazing	12mm tempered glass
Covering	12mm FAST PRO® turf - Semi-sanded textured monofilament
Lighting	3-module 320W LED floodlights

Dimensions:



Structure:



Our new system of 2x1m monoblock panels:

Horizontal crossbars made of 50x30mm tubing and vertical posts made of 3mm-thick flat bar.

Filled with **50x50x4mm mesh panels**
Installed by slotting onto load-bearing posts

Simplified maintenance: In the event of damage, it is no longer necessary to dismantle an entire section of the structure if a panel breaks.

Quick installation of the entire Padel court



Surface treatment:

The structure is made entirely of **galvanized steel (Sendzimir)**:

The steel is continuously galvanized in coil form (sheet metal) before being formed into tubing or posts.

The zinc coating is perfectly uniform (approximately 40 microns). This results in an extremely smooth surface, ideal for high-quality powder coating (paint).

For an indoor padel court, this is the optimal choice.



Finish:

Application of an epoxy powder coating and curing in an oven at 250°C (powder coating)

Structure RAL 7016 and lighting posts RAL 3020



Bolts and nuts:

Mounting of base plates to the ground using **M16x150 anchor bolts**. The entire Padel structure is secured with 124 expansion bolts.

The structure and frames are secured to each other using **316L stainless steel bolts** and to the support posts.

The glass panels are secured using 8mm countersunk stainless steel bolts with **PA6-type Teflon spacers** and sealing caps.



Glass panels:

The court end walls with 4-meter corner extensions consist of **12mm tempered glass** panels with drilled and milled openings.

Compliant with EEC regulations and EN-12150-2, tested according to construction standard EN-14179-2.

Number of glass panels per court	18
Dimensions	2995x1995mm
Thickness	12 mm (+/-5%)
Number of holes per pane	10
UVA transmission	52%
Light transmission	88%
External light reflection	8%
Direct solar absorption	16%
Fire risk	0%
Bullet resistance (EN 1063)	5.60



The separation between the metal support frame and the glazing is achieved by installing a 40mm-wide **polymer + EPDM spacer** to prevent any contact between the metal and the glass and **to absorb vibrations and thermal expansion.**

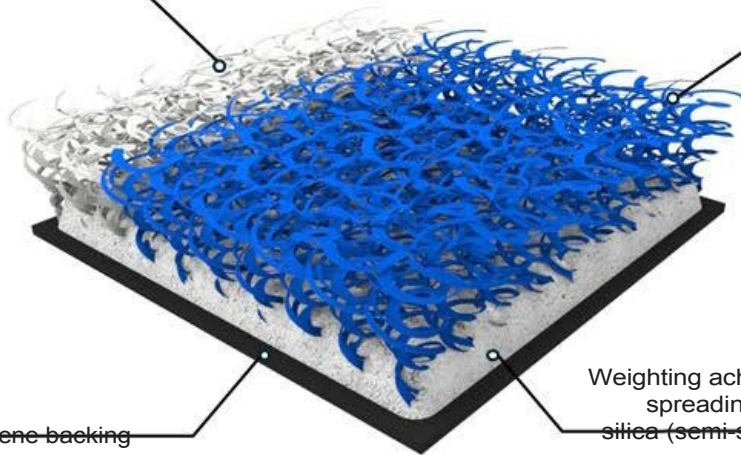
Density	20 kg/m ³
Rotational tensile strength	>450 kPa
Rotational elasticity	>90%
Compressive strength 25%	35–63 kPa
Observed compression set (22 h, 50%, 23°C)	<25%
Water absorption	<5%
Dimensional elasticity	+100%
Fire rating	M2



G12 FAST PRO® synthetic turf:

White lines embedded in the turf

12mm textured polyethylene monofilament fibers (curly appearance)



Autres Coloris:



Polyethylene backing

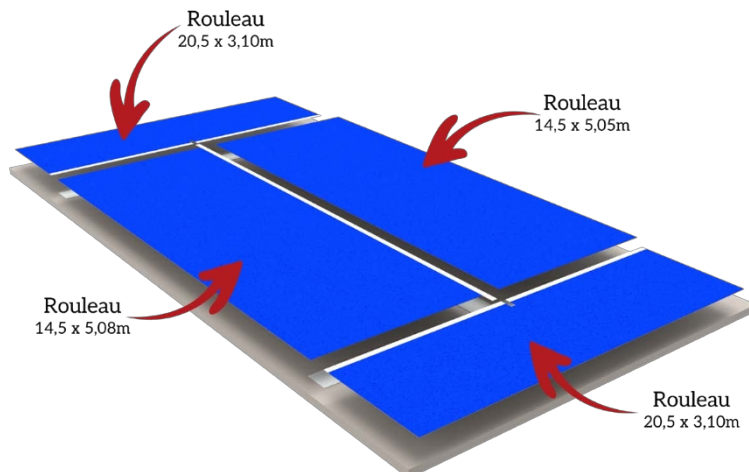
Weighting achieved by spreading natural silica (semi-sanded: 8 kg/m²)

Synthetic surface (semi-sand) ITF 3FAST classification:

Fiber type	Textured monofilament
Composition	100% Polyethylene
Fiber height	12 mm (+/-5%)
Gauge	3/16
DTEX	8800 Dtex
Stitch count	46,586/m ²
Backing	Polypropylene + polyester fiber
Finish	Polyurethane
Total carpet weight	2343 g/m ²
Filling	Calibrated silica 0.4/0.8 mm (6 kg/m ²)



Free-lay installation (**independent of the substrate**): Kit consisting of 3 rolls. The individual strips are joined by spreading polyurethane adhesive. **Seams are located only along the lines for a uniform finish. Game lines embedded in the surface**, white in color, 50 mm wide.



Contents of the G12 Fast Pro® turf kit
1 roll 20.50 x 3.10 m with integrated lines
1 roll 14.50 x 5.07 m with integrated white line
1 roll 14.50 x 5.05 m
1 roll of 50m bridging tape
1 15-kg container of two-component polyurethane adhesive
One pallet of 0.4/0.8 mm graded silica

ATLANTIDE[®]competition lighting:

Discover our new padel lighting system: a high-performance solution featuring **four 320W LED floodlights (each with three modules)** per court, equipped with **asymmetrical lighting** and spot-focused beams for optimal uniformity, and **factory-preset** for quick and hassle-free installation. **Connections are made at the base of the pole via an access panel.**

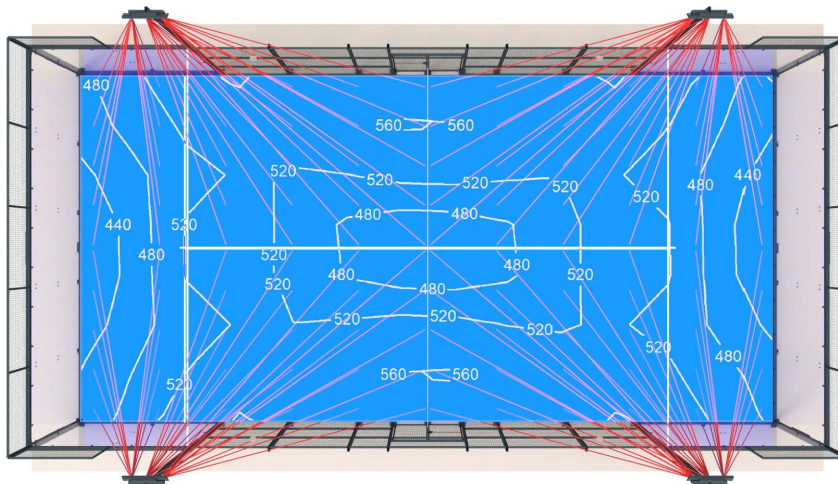
Projectors mounted on 6-meter poles with 120x60mm tubing integrated into the structure. **3G2.5 wiring** and control cabinet with circuit breaker and key-operated contactors.



Power	320W
Light color	6000K
LED chip	162xSMD 5050
Voltage	100-240VAC 50/60Hz
Luminous flux	48,000 lm
Luminous flux per watt	150 lm/W
Beam angle	90°
CRI	+70Ra
IP rating	IP66
Estimated lifespan	50,000 hours
Material	Aluminum and tempered glass
Dimensions	950 x 256 x 106 mm
Cable length	600 cm
Average floor illuminance	512 lux
Uniformity (u0)	0.70

Unlike traditional (symmetrical) lighting, which distributes light in a circular pattern, **asymmetrical lighting** allows you to:

- **direct the light beam** solely toward the playing field
- **minimize light loss** outside the playing area
- **reduce glare** for players and spectators
- achieve **better lighting uniformity** across the playing surface



Net posts:

80x80mm hot-dip galvanized tubular posts, mounted on a base plate, powder-coated RAL 7016.

Tensioning system with a worm screw integrated inside the post to facilitate net tensioning

3mm polyethylene padel net with a white woven polyester band at the top. **6mm tension cable** made of galvanized and plastic-coated steel



Warranties:

- **Metal structure: 3-year warranty against structural failure** (EXCEPT for structures installed within 3 km of the sea.)
- **Glazing: 3 years**, mechanical strength and cracking.
- **Synthetic turf surface: 5-year warranty** against total fiber wear (subject to proper maintenance).



Maintenance:

Our padel courts, like all sports equipment, must be inspected and maintained regularly:

Every month:

Visual inspection

Annually:

Structure:

- Ensure that all fasteners throughout the structure are properly tightened
- Check the condition of the glass seals and the flanges that hold the glass in place,
- Ensure that the glazing is securely fastened. Check for proper operation and alignment.
- Ensure that the grilles are properly secured and check the condition of the grilles in the lock panel,
- Check the tension of the net (after inspection, the crank must always be removed to prevent excessive strain on users).

Lighting:

- Ensure that the floodlights are securely fastened to the lighting poles
- Check that the floodlights are functioning properly

Artificial turf:

- Regular blowing to remove debris and leaves (outdoor padel court),
- Regular mechanical brushing to straighten the fibers and ensure even distribution of silica, every 15 days for 10 minutes (assuming 5 hours of daily use),
- Refill with silica as needed at the base of the mat; the silica should reach halfway up the fiber height to prevent fiber pull-out and ensure the weighting effect (risk of blistering if used without silica).
- Refill regularly (approximately 120 kg/year).

For any requests regarding maintenance equipment and materials (silica, fasteners, sweeper, etc.), please contact our Customer Service Department

We also offer an annual maintenance contract that includes a service call performed by our specialized teams to check the condition of the structure, the operation of the glazing, and the maintenance of the synthetic turf surface.